



REMINGTON

4 BEDROOM

4 BATH

ELEGANT LIVING IN CASUAL FARMHOUSE STYLE

With its wrap-around porch, gabled roof and board-and-batten siding it just feels like home. Inside, a gracious foyer invites you to relax in the large family room. The kitchen opens to a spacious casual dining area and a classic screened back porch. A generous master suite and secluded office are on the main level. The pair of upper level bedrooms each has its own bath.

Orchards
at Squire Creek

REMINGTON HOME FEATURES

SQUARE FOOTAGE

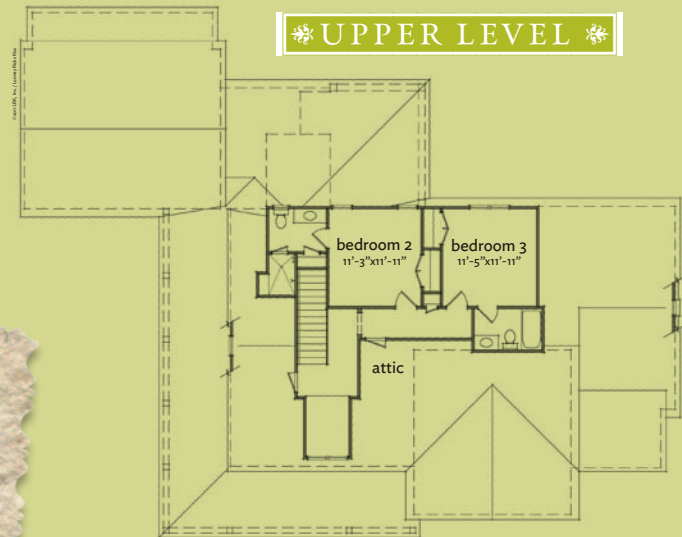
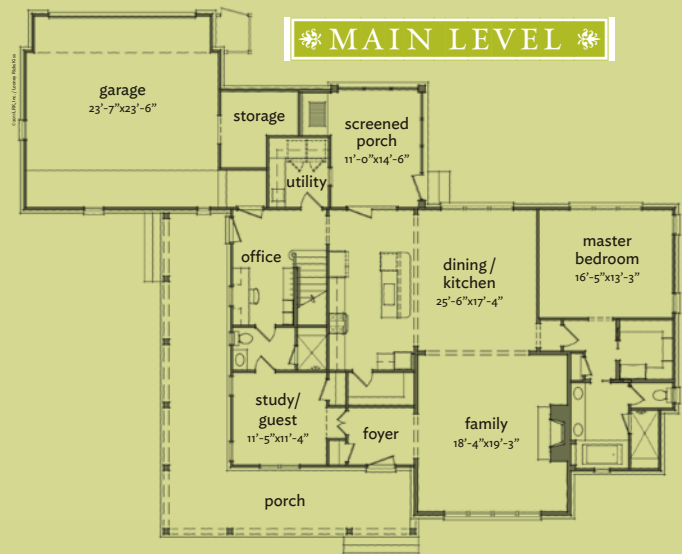
Main Level Heated Square Feet:	1,933
Upper Level Heated Square Feet:	613
Total Heated Square Feet:	2,546
Porches Square Footage:	711

INTERIOR HIGHLIGHTS

- Wrap-around front porch
- Spacious open floor plan
- Walk-in pantry
- Flexible guest room/study on main level
 - Works as 3 or 4 bedroom plan; can convert to 5 bedroom
- Screened porch with convenient grill
- Extra storage off garage

LANDSCAPE

- Sodded front and rear yards
- Shade trees
- Irrigation system



E

Orchards
at Squire Creek

Architectural rendering may not reflect the final details or landscaping of the completed home. Renderings are artist depictions and may differ from completed construction. Dimensions are subject to revision without notice. Rendering art copyright Open Air Architecture 2011. Plan copyright Looney Ricks Kiss.