



OAKLAWN

3/4 BEDROOM **2½ BATH**

GRACIOUS AND WELCOMING

The charming, traditional exterior and broad front porch offers a friendly, timeless feel to the Oaklawn. Triple windows flood the open living/dining space and the master bedroom with light and views. To the rear of the house, a cozy back porch is just the place for morning coffee, and a dedicated home office is convenient to the efficient kitchen. Upstairs features two bedrooms with a shared bath and space to easily expand to three upstairs bedrooms.

—◆◆◆—
Orchards
at Squire Creek

OAKLAWN HOME FEATURES

SQUARE FOOTAGE

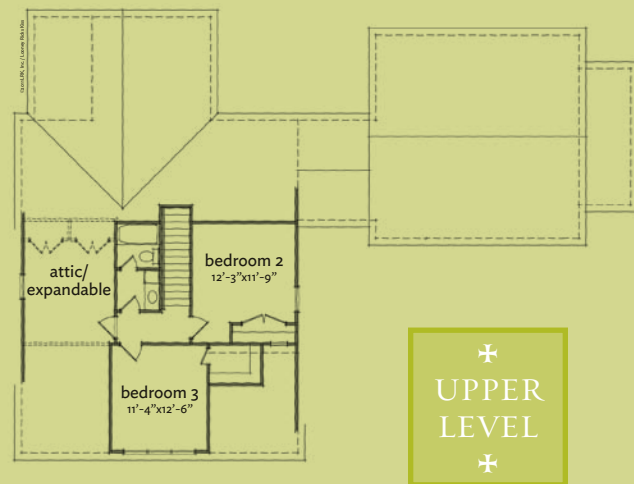
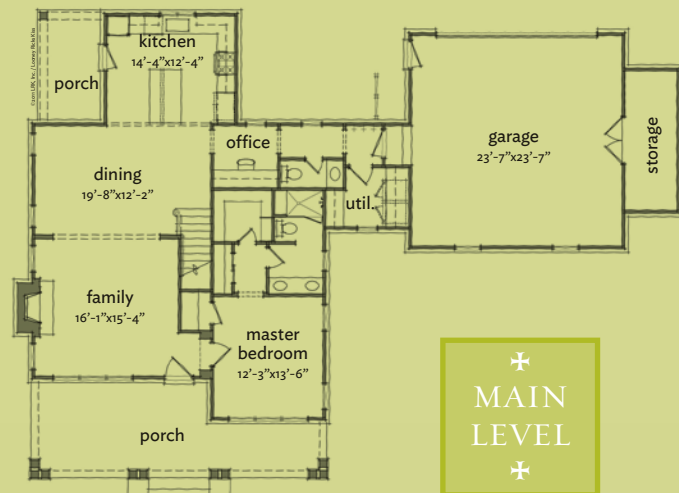
Main Level Heated Square Feet:	1,293
Upper Level Heated Square Feet:	477
Total Heated Square Feet:	1,770
Porches Square Footage:	398

INTERIOR HIGHLIGHTS

Broad front porch
First floor master with spacious closets
Master bath with double vanity and large shower
Two bedrooms on the upper level
Bonus space can expand to third upstairs
bedroom, playroom or media room
Garage with added storage space

LANDSCAPE

Sodded front and rear yards
Shade trees
Irrigation system



Orchards
at Squire Creek

Architectural rendering may not reflect the final details or landscaping of the completed home. Renderings are artist depictions and may differ from completed construction. Dimensions are subject to revision without notice. Rendering art copyright Open Air Architecture 2011. Plan copyright Looney Ricks Kiss.